

**Calcitonin**  
**Rabbit Monoclonal antibody(Mab)**  
**Catalog # AD80258**

## Specification

---

### Calcitonin - Product info

Application	<b>IHC-P</b>
Primary Accession	<a href="#">P01258</a>
Reactivity	<b>Human</b>
Host	<b>Rabbit</b>
Clonality	<b>Monoclonal</b>
Calculated MW	<b>15467</b>

### Calcitonin - Additional info

Gene ID	<b>796</b>
Gene Name	<b>CALCA</b>

#### Other Names

Calcitonin, Calcitonin, Katalcalcin, Calcitonin carboxyl-terminal peptide, CCP, PDN-21, CALCA, CALC1

#### Dilution

IHC-P~~Ready-to-use

#### Storage

Maintain refrigerated at 2-8°C

#### Precautions

**Calcitonin Antibody is for research use only and not for use in diagnostic or therapeutic procedures.**

### Calcitonin - Protein Information

**Name** CALCA ([HGNC:1437](#))

#### Synonyms

#### Function

#### CALC1

**Calcitonin causes a rapid but short-lived drop in the level of calcium and phosphate in blood by promoting the incorporation of those ions in the bones.**

#### Cellular Location

**Secreted.**

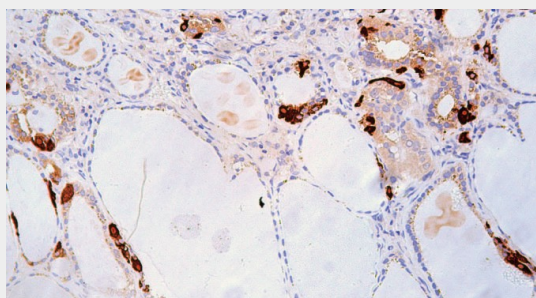
### Calcitonin - Protocols

Provided below are standard protocols that you may find useful for product applications.

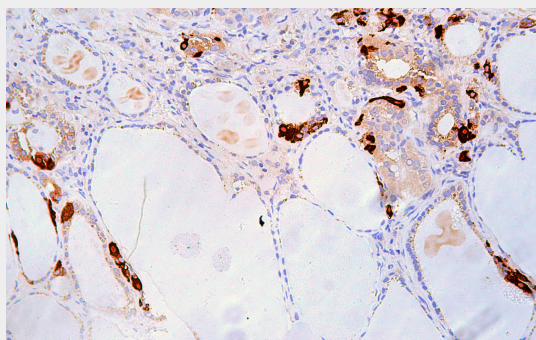
- [Western Blot](#)
- [Blocking Peptides](#)

- [Dot Blot](#)
- [Immunohistochemistry](#)
- [Immunofluorescence](#)
- [Immunoprecipitation](#)
- [Flow Cytometry](#)
- [Cell Culture](#)

## Calcitonin - Images



Papillary thyroid carcinoma,



Immunohistochemical analysis of paraffin-embedded papillary thyroid carcinoma; tissue using AD80258 performed on the Abcarta® FAIP-30 Fully automated IHC platform. Tissue was fixed with formaldehyde at room temperature, antigen retrieval was by heat mediation with a Citrate buffer (pH6.0). Samples were incubated with primary antibody (Ready-to-use) for 15 min at room temperature. AmpSee™ Detection Systems [Abcepta:AR005] was used as the secondary antibody.